
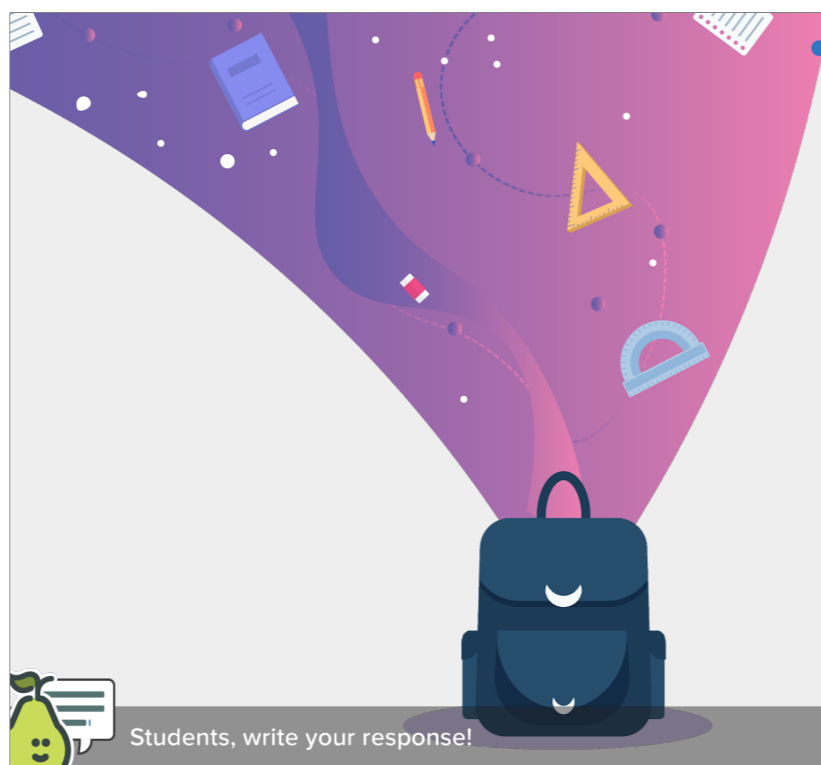


Driving Question



How can we, as members of our classroom community, create ways to be safe and help each other while learning online?

Teacher Notes: If you are using this slide show along with the [PBL Document](#), there is an alternate driving question for upper elementary students.





How do we use our computers to learn?

Type (or use voice typing) your ideas on this slide.

Students, write your response!

Pear Deck Interactive Slide
Do not remove this bar

 This is a Pear Deck Text Slide

 To edit the type of question, go back to the "Ask Students a Question" in the Pear Deck sidebar.

Teacher Notes: Primary Online Learning Slideshow available here: <https://docs.google.com/presentation/d/1BP55pJP4ZOYWywAgtiGgjzFifj54fn-t0RdP1Yz3X8/edit#slide=id.p>



Teachers: Prompt students to share ideas with the class. This can be done as a class discussion, BCU conversation, FipGrid, or launched as a Pear Deck Question.

Student ideas: Students might say things like, "Be nice, share, take turns, help each other, follow directions, listen to the teacher."

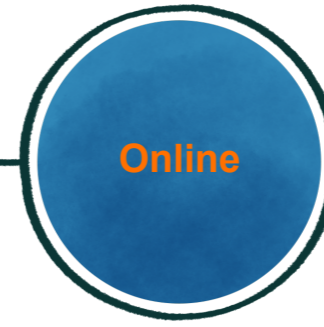


Teachers: Prompt students to share ideas with the class. This can be done as a class discussion, BCU conversation, FipGrid, or launched as a Pear Deck Question.

Student ideas: Students might say things like, "Be nice, use tools the teacher has asked you to use, finish your work, help each other."

Good Choices Everywhere!

Draw a good choice that you use when learning at school *and* online.




Students, draw anywhere on this slide!

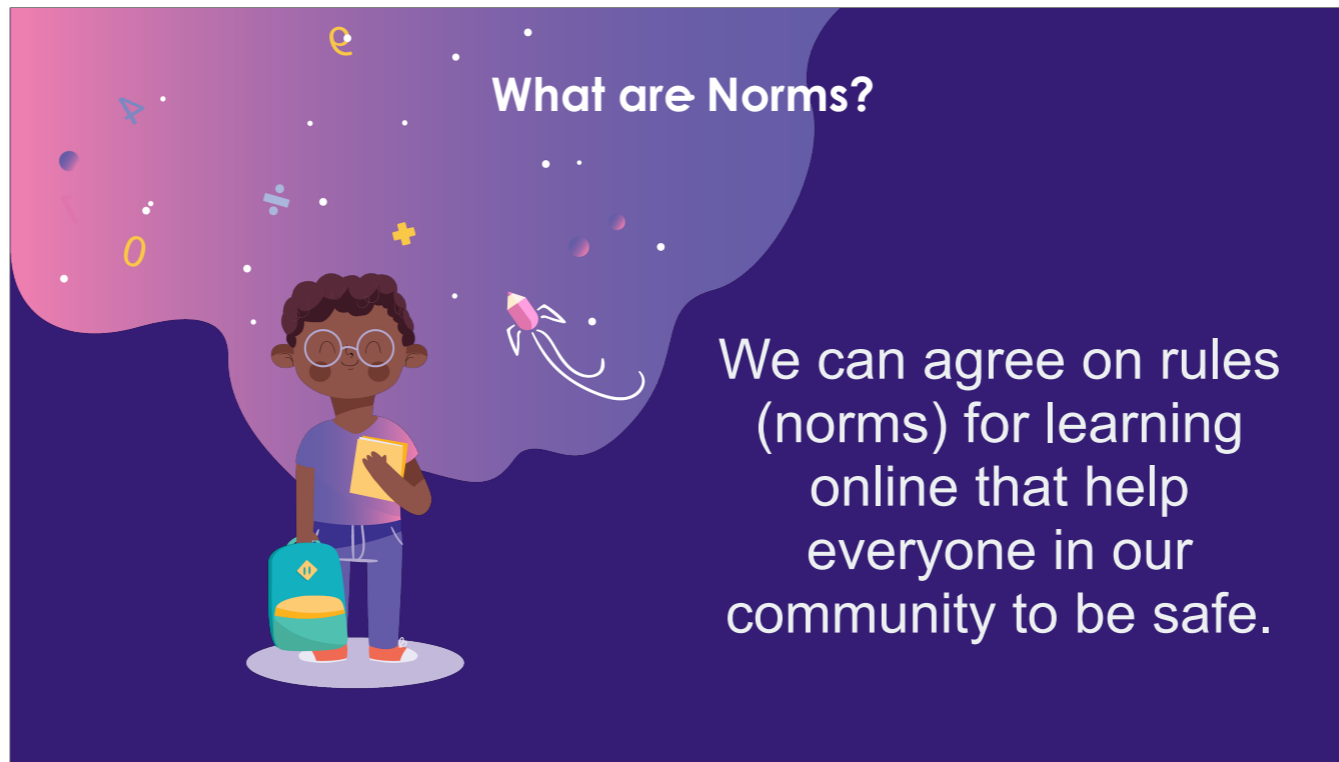
Pear Deck Interactive Slide
Do not remove this bar

Make Connections

Making connections between different concepts is an important thinking skill. Before presenting, fill in the yellow and blue circles with two concepts you are learning about in today's lesson (or maybe one concept from today and one concept from last week). Ask students to think about what connects the two concepts in the box. Show their responses anonymously on the projector to discuss.

 This is a Pear Deck Drawing Slide

 To edit the type of question, go back to the "Ask Students a Question" in the Pear Deck sidebar.



Teacher explains difference between RULES and NORMS.

Drag your dot to show whether you agree or disagree: *We can create some class norms to help our classroom community to be safe.*

Agree Disagree

Pear Deck Pear Deck

Students, drag the icon!

Pear Deck Interactive Slide
Do not remove this bar

Agree or Disagree

Use this template to do a quick check of students' opinions during your lesson.

- 🍏 This is a Pear Deck Draggable™ Slide.
- 🍏 To edit the type of question, go back to the "Ask Students a Question" in the Pear Deck sidebar.

Need to Knows

What do we need to know to create our norms?

Students, write your response!

Pear Deck Interactive Slide
Do not remove this bar

The slide features a purple and pink wavy background with white stars. On the left, an orange pencil with a red eraser and a blue band is depicted as a rocket ship. At the bottom left, there is a small green pear icon with a speech bubble. The text 'Need to Knows' is at the top center, and the question 'What do we need to know to create our norms?' is in the center. The instruction 'Students, write your response!' is at the bottom left, and the footer 'Pear Deck Interactive Slide Do not remove this bar' is at the bottom right.

This is a Pear Deck Text Slide

To edit the type of question, go back to the "Ask Students a Question" in the Pear Deck sidebar.

Class Need to Knows



Teachers: Use this slide to compile the students' individual Need to Knows

Possible need to knows include: rules for using technology, keeping information safe, What are school rules for learning safely online (AUP and SR&R)

Class Norms

What are the norms you think the class should agree to when learning online?



Teachers can make this more interactive by creating a Flipgrid for student responses or allowing students to discuss their ideas in a breakout group or small group.

How Can You Help?

What can you do if someone is not making a good choice online?



Students, write your response!

Pear Deck Interactive Slide
Do not remove this bar

Thinking Broadly
Identifying and articulating questions we have is an important thinking skill. Give students the opportunity to think broadly about today's topic and identify their own questions. Show their responses anonymously on the projector to discuss.

- This is a Pear Deck Text Slide
- To edit the type of question, go back to the "Ask Students a Question" in the Pear Deck sidebar.

Agree on Norms

What are the norms we agree to follow?



Agree on Norms - Class Discussion



Teachers can guide class discussion and compile norms in a list here.

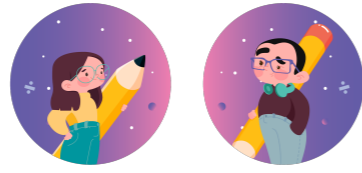
Agree on Norms - Promise

We are a
classroom
community of
learners.



We promise
to follow our
norms and
help each
other learn
safely online.





Draw or type your name to agree to follow our class norms:


Let's Sign!



Students, draw anywhere on this slide!

Pear Deck Interactive Slide
Do not remove this bar

 This is a Pear Deck Drawing Slide

 To edit the type of question, go back to the "Ask Students a Question" in the Pear Deck sidebar.

CREDITS: This presentation template was created by **Slidesgo**, including icons by **Flaticon**, and infographics & images by **Freepik**



THANKS

Does anyone have any questions?
addyouremail@freepik.com
+91 620 421 838
yourcompany.com



Please keep this slide for attribution