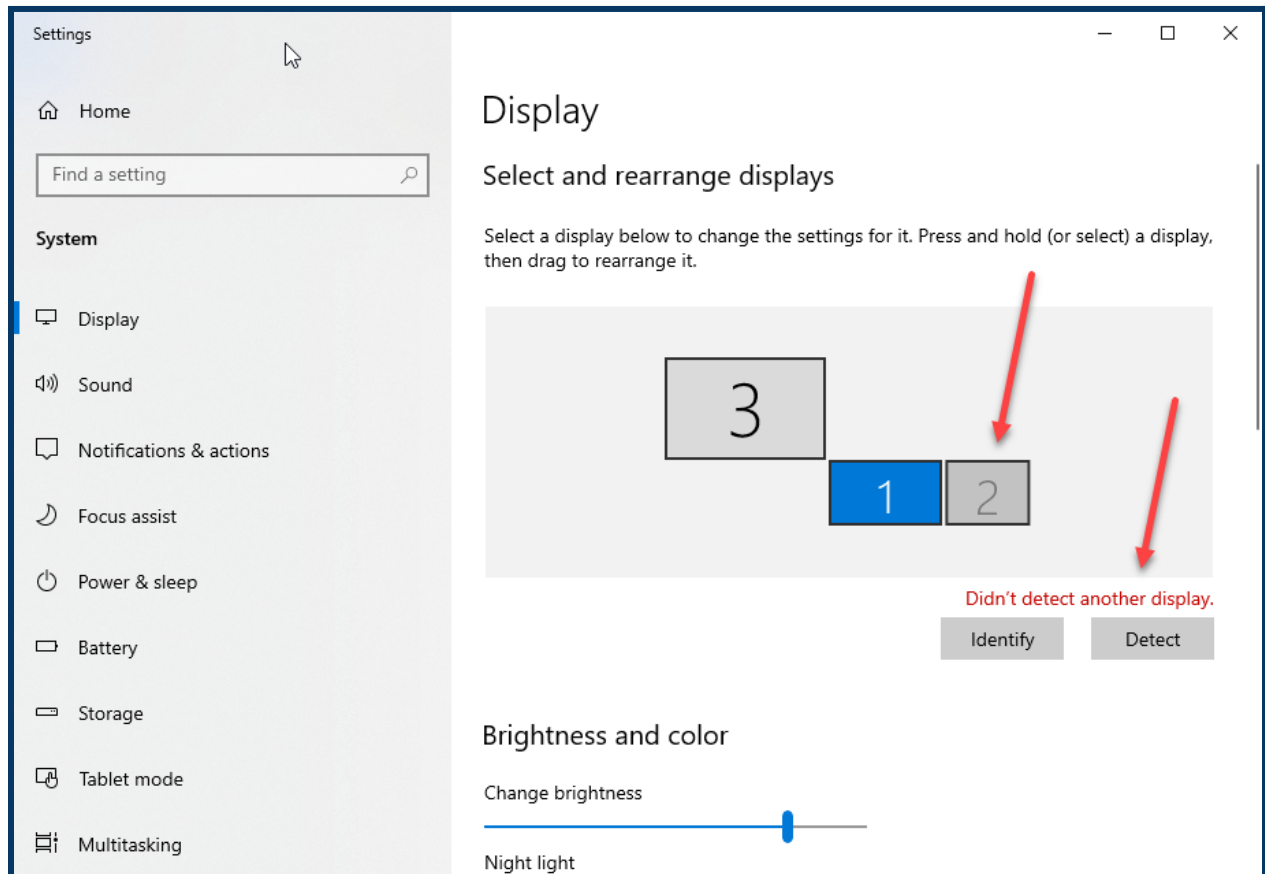


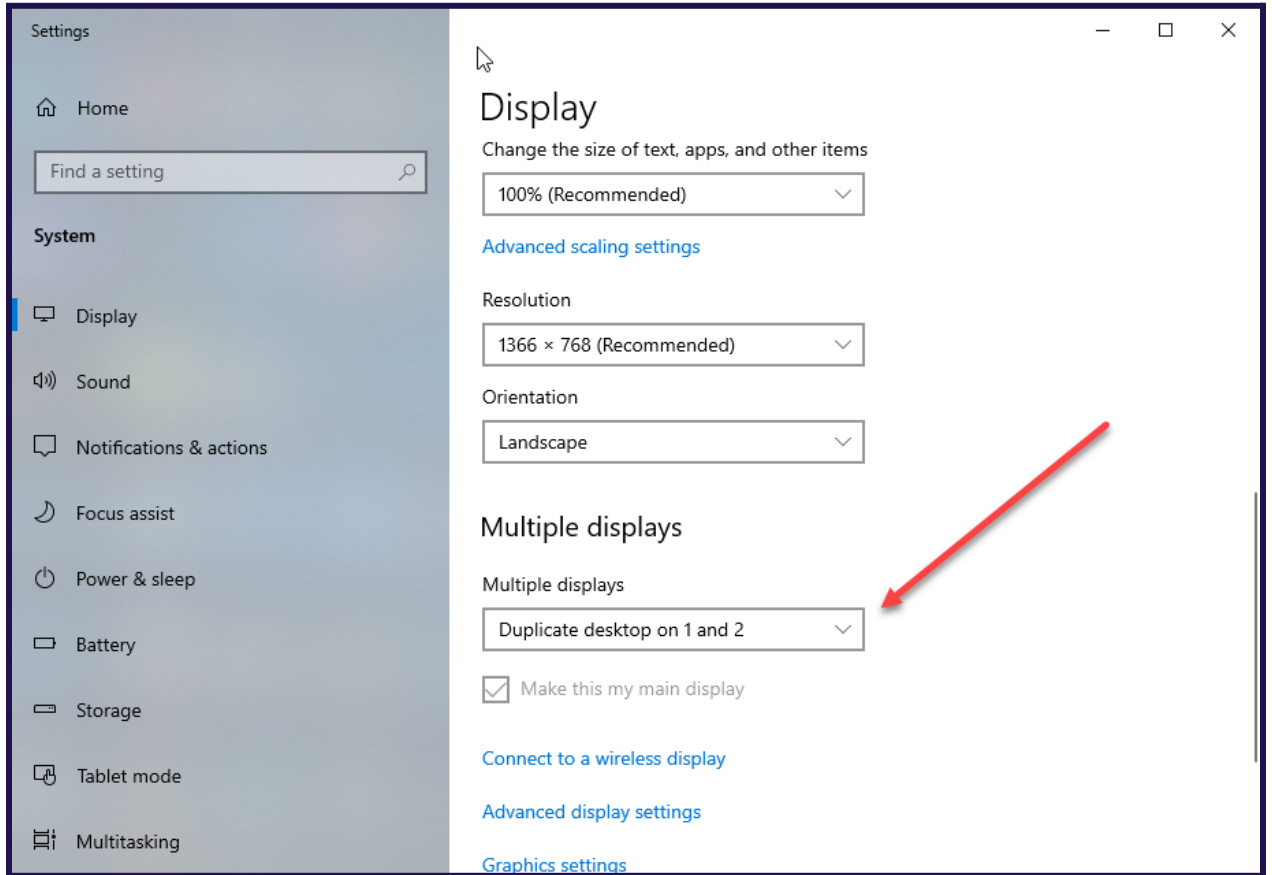
What To Do When One Monitor Won't Display

If you accidentally chose to disable one monitor or display in your display settings, you may see the following:

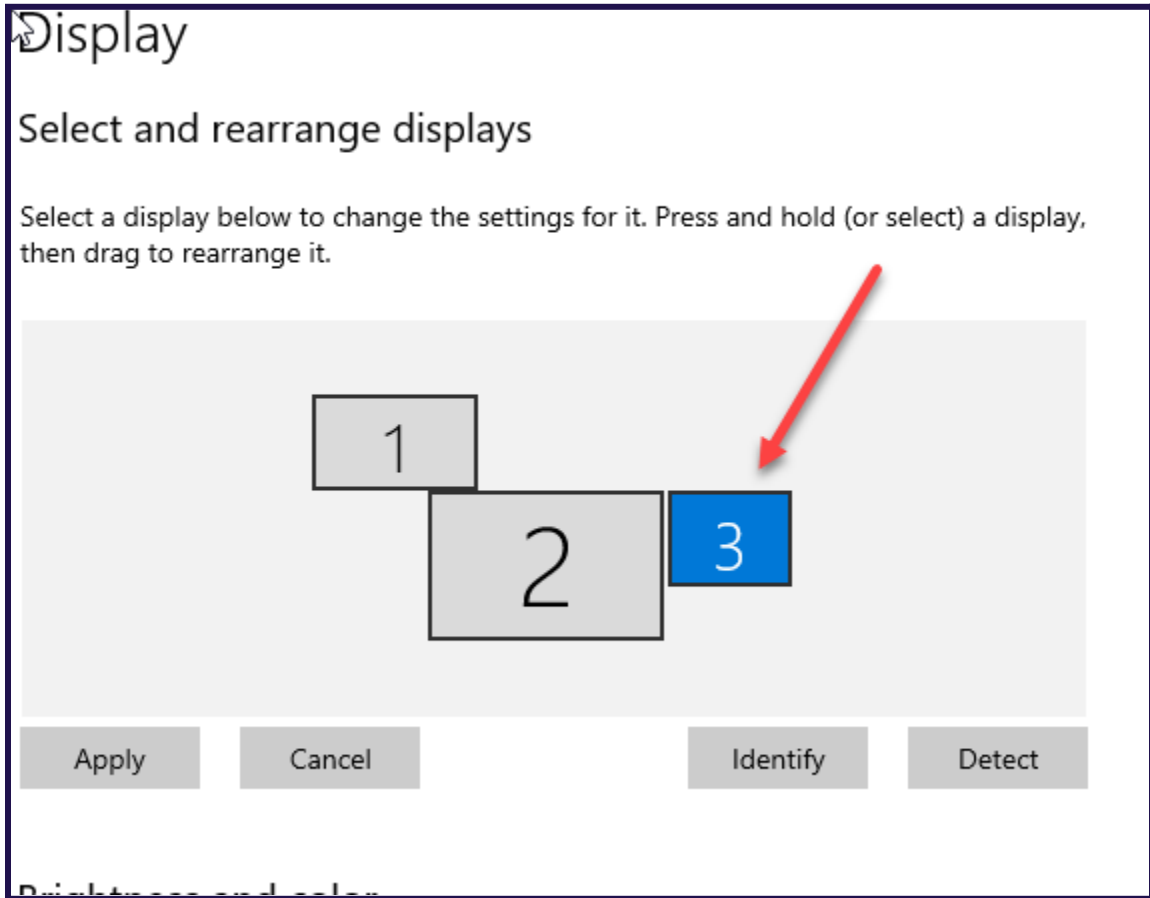


One monitor or display will be dark, even though it is connected. To fix this, follow these steps:

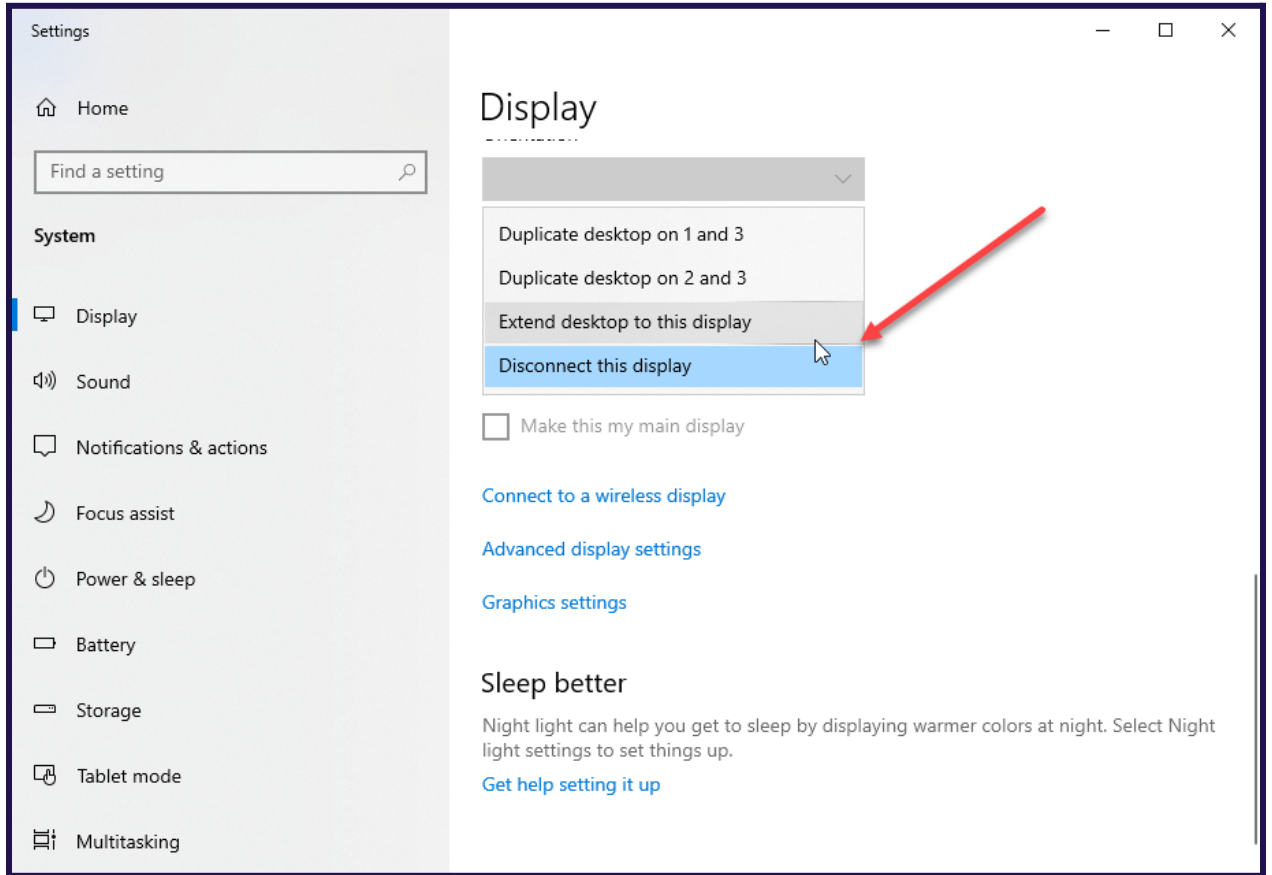
1. Duplicate your desktop to the disabled screen.



2. Click on the disabled screen, highlighting it:



3. Scroll down and choose Extend Desktop to this display:



4. All your displays will be active again and you can continue setting them up the way you prefer.

